

## COATING FAÇADES DECORATION

### IN EXECUTION



FINISH



#### APPLICATIONS /

- High features mortar formulated for the placement and adjustment plate exterior insulation.
- For repair and adjustment of facades, walls... of restoration and new construction.

#### ALLOWED SUPPORTS /

- Mortar, ceramic brick, termoarcilla, concrete block, walls concrete...

#### APPLICATION RECOMMENDATIONS /

- Application temperature 5-30°C.
- Respect always the same percentage of water.
- On dry and absorbents walls, wet before applying the mortar.
- The support should not have irregularities greater than 10 mm with 2 m rule.
- In restoration Project clean up before all the parts and restore degraded or loose with **Pavigrout/ Pavigrout Rápido**.



[www.pavistamp.com](http://www.pavistamp.com)

Customer Service: +34 902 158 743

## High performance mortar for thermal insulation

### REVISLANT

#### DESCRIPTION /

Special cement, mineral charges, resins, fibbers and additives.

#### COMMENTS /

- Wind causes low time open of the mortar and became into low adhesion.
- Do not apply with risk of rain, freeze or thaw.
- Do not apply on mortars damage or weak.

#### USE CHARACTERISTICS /

- Set time after mixing: 5 min.
- Rectification time of the plate: 15 min.
- Mixture life: 1-2 hours approximately.
- Thickness by coat: 3-5 mm

\*\*This times can vary considerably according type of support and the environment conditions.

#### FEATURES /

- Powder density: 1400 kg/m<sup>3</sup>
- Mixing water: ±25%
- Paste Density: 1600 kg/m<sup>3</sup>
- Water retention: 99%
- Unstuck piece of 10 kg: 0mm
- Adhesion (28 days) ≥1 N/mm<sup>2</sup>
- Flexural strength: 4.5 Mpa
- Compressive strength: 9.4 Mpa
- Racking: 2.8 mm
- flammability: MO

\*These results has been obtained in standard conditions and can vary depending on placement.

#### TERMS EXECUTION /

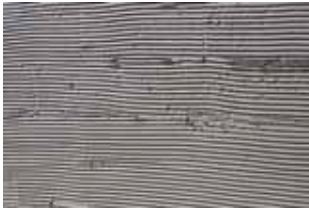
- The support must be resistant and completely setting, free from dust, oil, grease...
- Application thickness to fixing the plate 2-4 mm.
- Thickness to adjustment 3-5 mm by coat.
- The starting profile is placed to ±10mm from floor.
- The fibreglass mesh shall provide an overlap of at least 10 cm. With the mesh in a row

SYSTEM  
**REVISLANT**  
 THERMAL INSULATION

**HOW TO USE /**

Mix **Revislant** with 5-6 litres of clean water by bag of 25 kg until obtain an homogeneous and smooth mass.

\*Let set 5 minutes.



Extend the mortar with notched trowel in little sections (2-3 m<sup>2</sup>) and make the bonding of the plate.



Once place the plates with the joints interspersed and the mortar dry (24 hours) it will drilled for the placement of clamping block.



After 24 hours approx. It will adjust the surface and then with the fresh paste to extend the mesh across the entire surface.

Once dry, apply a mortar to stabilize and cover the mesh view or any small irregularities.

**PRODUIT****REVISLANT****High performance mortar for thermal insulation**

- System acoustic and thermal insulation for exteriors
- To adjust and placement of plates
- Excellent adhesion
- Save energy
- Deformable and breathable

**PRESENTATION /**

Bags of paper of 25 kg, moisture-proof  
 Pallets of 1200 kg (48 bags)

**COLORS /**

White and grey

**YIELD /**

Fixing: 4-5 kg/sqm  
 Adjustment: 3-5 kg/sqm

\*These consumption can vary depending on the placement.

**STORAGE /**

12 months since manufacture date, in closed original container and shelter from the weather and moisture.

**MORTECRIL****PAVICEM**

When the **Revislant** be completely setting apply the finishing touch:

\*Acrylic Mortar **Mortecril**

\*Micro-mortar **Pavicem**