



Micro-mortar for floor renovation and decoration

PAVICEM MICRO-MORTAR 2 MM THICKNESS

APPLICATIONS /

- Colored Micro-mortar deformable of high features to renewal and decoration of floors.
- Suitable for pedestrian and road traffic.
- Minimum thickness (1-2 mm)
- No wear
- On concrete slabs, terrazzo, Marble, ceramics, wood, glass...

FINISHES /

- Smooth and rough
- Type venetian, marbling, wood...

APPLICATION RECOMMENDATIONS /

- Respect always the same percentage of **Acrylcem** during the mixture.
- Do not add water.
- Respect the expansion joints and retraction.
- Application temperature 5°C to 35°C

DESCRIPTION /

Special cement, selected aggregates, additives, resins and pigments.

COMMENTS /

- Do not add water or any other additive to the mortar.
- In absorbents or porous surfaces wet before apply the product.
- Treat the singular areas (fissures...) with mesh fibreglass.
- The time of dry can vary depending on the temperature and the damp.

USE CHARACTERISTICS /

- Mix life: 3 hours
- Open time: 2 hours
- Maximum thickness: 0.1-2 mm
- Maximum thickness by layer: 0.5-1 mm
- Hard to the touch: of 5-7 hours
- Put into service: ≥ 48 hours

*These times can vary considerably depending on temperature.

FEATURES /

- Adhesion EN-1015/12: 0.98 N/mm²
- Absorption of water: 0.004 g/cm²
- Freeze-Thaw: 0.01 kg/cm²

* These results has been obtained in standard conditions and may vary depending on conditions of placement





EXECUTION CONDITIONS /

- The support must be durable, completely setting, and free of dust, oil, grease...
- Before apply the micro-mortar **Pavicem** recommended that the base of the mortar, concrete or screed is completely set (≥ 28 days)
- Apply a first layer of **Pavicem Grueso** to regularize the surface.
- In the old concrete, milling the surface layer, pressure washing and stripping out the pools of water, apply 1-2 coats of consolidator **F-600**.

PRODUCT

PAVICEM MICRO-MORTAR 2 MM THICKNESS

Micro-mortar for floor renovation and decoration

- Continuous Pavement colored
- Without joints
- Deformable and flexible
- Impermeable and breathable
- No wear abrasion
- High features
- Indoor and outdoor

HOW TO USE /



The mixing relation is 2 to 1.
(2 parts of **Pavicem** by 1 part of **Acrylcem** approx).

Mix with low speed mixer, until obtain homogeneous and smooth mass.



1) On irregular surfaces, apply a first coat of regularization with **Pavicem Grueso**.

2) Apply manually with the appropriate trowel in layers of maximum 0.5 mm, until obtain the desired effect.



Once the surface is completely dry (24-48 hours) apply 1-2 coats of cured resin **Orfapol-50** (water base).

Optional:

Orfapol Incoloro, porcelain-effect.

PRESENTATION/Containers 1-5-15 kg
Plastic can of 15 kg
Pallets de 405 kg (27 cans)



COLORS /

Color chart of 56 colors
(Others on request)

YIELD /

400 – 800 g/m²

*These consumption may vary depending on the supports and the number of coats.

STORAGE /

12 months since date manufacture in original closed container and shelter form weather.

REFERENCES/

On irregular floors and ceramic apply one coat to regularize of **Pavicem Grueso**.

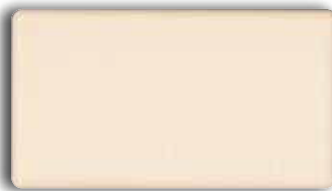
PAVICEM COLORS



CHART COLORS



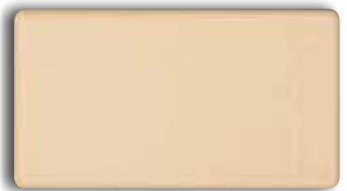
Blanco



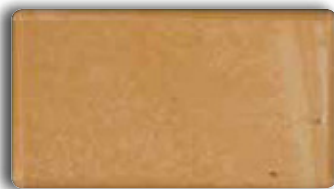
Blanco 03



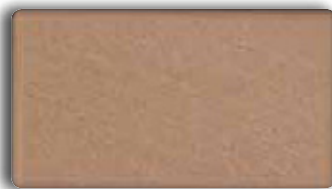
Blanco Roto



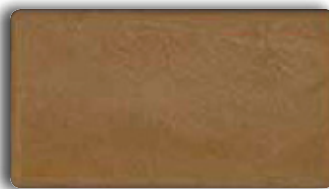
Hueso



Arena-2



Piedra París



Tierra



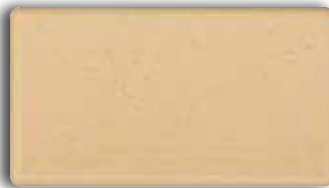
Arena 96



Ocre



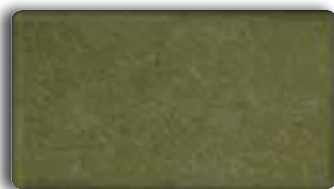
Amarillo



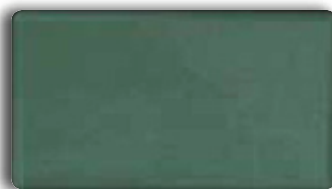
Ambar



Verde Limon



Verde Oscuro



Turquesa



Selva



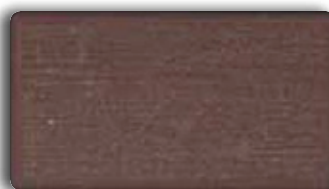
Azul Claro



Maya



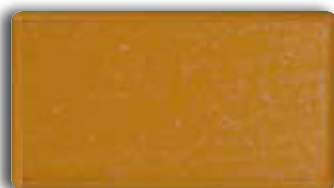
Estelar



Morado



Lila



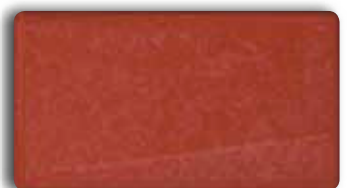
Cobre



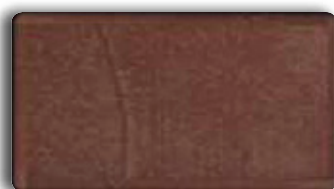
Anaranjado



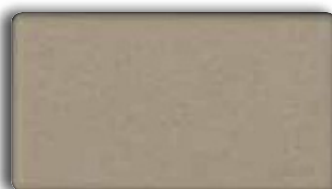
Teja



Papaya



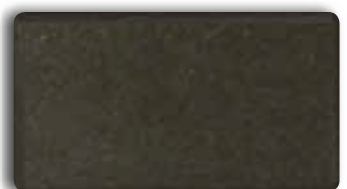
Granate



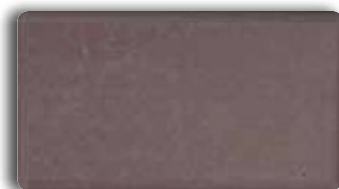
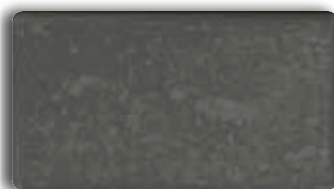
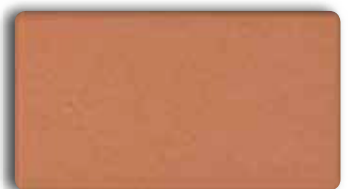
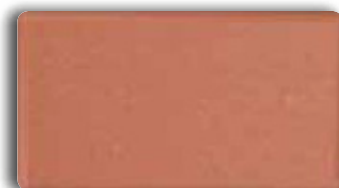
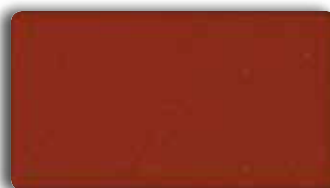
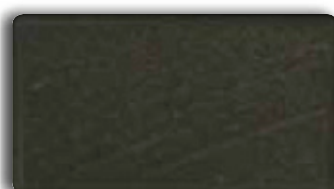
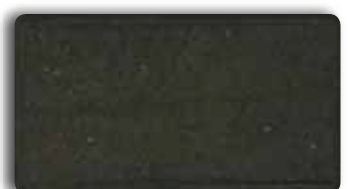
Gris Base



Gris Claro



Ceniza

CHART COLORS**Marfil****Beige****Sahara****Marrón Claro****Oro****Marrón 140****Arenisca****Albero****Jade****Verde Inglés****Manzana****Paja****Azul****Azul-E****Azul Profundo****Azul Oscuro****Malba****Cobalto****Púrpura****Salmón****Rosa****Rojo Alicante****Burdeos****Rojo Inglés****Piedra****Pizarra****Plata****Negro**